



Centre for Management
and Economic Research

Is it Social Influence on Beliefs Under Ambiguity? A Possible Explanation for Volatility Clustering

Hammad A. Siddiqi



LAHORE UNIVERSITY OF
MANAGEMENT SCIENCES

Centre for Management and Economic Research (CMER)

Lahore University of Management Sciences (LUMS)

Opposite Sector 'U', D.H.A, Cantt, Lahore, 54792

Pakistan

URL:<http://ravi.lums.edu.pk/cmer>

Abid. A. Burki

Director CMER

Professor of Economics

School of Arts and Sciences

CMER Advisory Committee

Rasul Bakhsh Rais

Professor of Political Science &

Head Social Sciences Department

School of Arts and Sciences

Naim Sipra

Director Case Development

and Publications & Professor

of Finance Suleman Dawood

School of Business

Ali Cheema

Associate Professor & Head

Department of Economics

School of Arts and Sciences



About CMER

The Centre for Management and Economic Research (CMER) is a research centre of LUMS based in the Department of Economics. The mission of CMER is to stimulate, coordinate, and conduct research on major economic and management issues facing Pakistan and the region. CMER research and dissemination roles are structured around four inter-related activities: research output in the form of working papers; cases and research monographs; creation of data resources; and organization of seminars and conferences. LUMS-Citigroup initiative on corporate governance in Pakistan is a major on-going project of CMER.

CMER WORKING PAPER No. 06-46

**Is it Social Influence on Beliefs under
Ambiguity? A possible Explanation
for Volatility Clustering**

Hammad A. Siddiqi

Assistant Professor of Economics
Lahore University of Management Sciences
Lahore, Pakistan
E-mail: hammad@lums.edu.pk

CMER WORKING PAPER SERIES

Copyright © 2006
Lahore University of Management Sciences
Opposite Sector 'U', DHA, Lahore Cantt.
54792, Lahore, Pakistan

All rights reserved
First printing April 2006

Editor: Abid A. Burki

CMER Working Paper No. 06-46

ISBN 969-8905-34-0 (print)
ISBN 969-8905-35-9 (online)

Is it Social Influence on Beliefs under Ambiguity? A Possible Explanation for Volatility Clustering

Hammad A. Siddiqi

1. Introduction

This paper is an exploratory study of financial market implications of social influences on probability judgments. Our results indicate that the social influence may be playing a role in generating a key stylised fact (volatility clustering) observed in financial markets.

Most macroeconomic time series relations are non-stationary with structural instability.² It implies the relevance of Knightian uncertainty (ambiguity) where a single objective probability distribution cannot be assigned to future outcomes; rather, a set of distributions is available any of which can be true.³

How do people act under Knightian uncertainty? Obviously, with multiple distributions there is no given anchor for expectations and without an anchor macroeconomic equations cannot give meaningful results. Gilboa and Schmeidler (1989) propose that the conservative nature of agents provides an anchor for expectations and this is the foundation for their maxmin expected utility approach under Knightian uncertainty. In their approach, agents pick the most pessimistic distribution from the set of possible distributions and then act accordingly.

In this paper, we propose that the social context of a person may provide an anchor for expectations and explore the financial market implications of this proposition. Social context is an important factor affecting our judgments and beliefs. Social psychologists have documented both implicit as well as explicit social influences on our judgments and beliefs. The very nature of interpersonal relations involves influencing others and getting influenced by others. Our thoughts, judgments, actions all seem to be greatly influenced by what others think and do. These influences operate both at conscious as well as subconscious level and affect us in a variety of explicit as well as subtle ways.

1. Examples of Implicit (Subconscious) Social Influence on Judgment from Social and Cognitive Psychology

In the light of what social psychologists tell us, peoples' judgments and behaviours can be influenced by the most innocuous and subtle manipulations. Thus, people express more favourable opinions about the future of the economy after they have seen a happy rather than a sad movie (see Forgas and Moylan, 1987); they agree more with a proposal to raise tuition after they hear it while nodding their heads in a vertical (yes) rather than a horizontal (no) manner (see Wells and Petty, 1980); and they are more likely to interrupt somebody after they unscramble sentences with rude rather than polite content (see Bargh et al. 1996).

²See Clements and Hendry (1999), Stock and Watson (1996), Davidson (1991).

³Frank Knight, the father of the Chicago school of economics, is one of the earliest economists to recognize the relevance of Knightian uncertainty. See Knight (1921).

In a very interesting study (Steele and Aronson, 1995) black students were asked to participate in a GRE-style test. In one version of the test, the students were given a pre-test in which they were asked to identify their race. Steele and Aronson found that asking black students to identify their race in a pre-test question reduced the number of right answers in the actual test by half. This is a startling result indicating that race identification was enough to generate all the negative stereotypes in the unconscious minds of participants. This negative preconditioning or priming (in the jargon of social psychology) greatly reduced the performance of black students. It makes one wonder whether people who go to expensive private schools perform better than others because of the constant positive priming rather than ability.

These and other effects appear to occur without a person's awareness; that is, they are implicit. When people are attempting to be rational, they presumably would not want their judgment of the economy to be influenced by the type of movie they have seen, or their judgment of an important issue to be influenced by their head movements, or their social behaviour to be influenced by an irrelevant cognitive task they have just completed, or their test performance to be influenced by a seemingly innocent question. The fact that people's judgments are influenced by irrelevant events and tasks makes it impossible to dissociate their states of mind from their social contexts. Hence, it is crucial to take into account a decision maker's social context in determining his behaviour. It is interesting to speculate that these subtle social influences can potentially provide insights into the different economic performances of different geographic units. Economic development or growth is affected by entrepreneurial activities and any entrepreneurial task requires the entrepreneur to make probability judgments. It can be argued that different social contexts (as an example, cultural optimism or pessimism) would lead to different judgments and different levels of entrepreneurial activity.

2. Examples of Explicit Social Influence on Judgment from Social and Cognitive Psychology

Social psychologists have shown that even in very simple situations, people are willing to follow the majority and abandon their own judgment when provided with information that others think differently from them. In a series of experiments inspired by Asch (1952), Deutsch and Gerard (1955) show that people are greatly influenced by majority opinion. In their experiments, each subject was asked to answer simple questions based on the length of line segments shown to him or her. Each subject almost always gave correct answers when asked individually in isolation. However, when the false information that a majority of others had answered differently was conveyed to them, about 35% of the time they changed their answers and agreed with the incorrect answers. These experiments are important because they show that even in very simple situations people are willing to abandon their judgment in favour of the majority. The urge to trust majority judgment over one's own judgment is likely to be even stronger when the situation is as highly ambiguous as in financial markets.

Sherif (1936) was one of the first social psychologists to investigate social influence on judgment. He presented participants with a stationary dot of light for 2 seconds in an otherwise dark room. This created an optical illusion known as the *auto kinetic*

effect: the stationary dot appeared to jump around. When participants were asked to judge how much the light had moved, they typically gave an estimate of around 1 to 10 inches. When group of participants were asked to announce their estimates out loud on consecutive days, a norm emerged. Their estimates gradually converged. In Sherif's study, participants cannot be sure about how much the light moved. Similarly, people cannot be sure about the true probability distribution of an uncertain prospect. In Sherif's experiment the judgments of others affected the judgment of a participant. Similarly, the judgment of others about the probabilities associated with an uncertain prospect may affect a person's belief.

Campbell (1961) examined conformism in a task where the correct answer is highly ambiguous. He formed micro-"societies" of two, three, and four individuals in which only one or two were real subjects, the remainder being confederates. Real and fake subjects were placed together in a darkened room and shown a fixed spot of light, then asked to estimate the distance that the light had travelled. In the experiment the light did not, in reality, travel at all—it was fixed. However, it is well known that due to a consistent optical illusion, people think the light moves about 4 inches: it's called the auto kinetic effect, as mentioned before. The confederates gave their estimate first, and they had been instructed to give estimates (16 inches) much higher than the usual estimates. Then the real subjects would give it a try. In the experiment this constituted the first "generation." For the second "generation," one of the fake subjects was removed and replaced with a real one and all participants then proceeded to make estimates again. This procedure was repeated until the micro-"society" was composed exclusively of real subjects. From then on, in each "generation," a real subject would be removed and replaced with another real subject, for a total of eleven "generations." What did they find? When there is only one confederate (fake subject) and two real subjects, the wildly high estimate of the lonely confederate (16 inches) nevertheless has some influence, as in the first generation the real subjects give estimates higher than 4 inches, though always below 9. When there are two confederates—a 2/3 majority—and only one real subject, the latter is quite strongly influenced and in the first generation gives a very similar estimate, about 14 inches.

3. Towards an Economic Framework Incorporating Social Influence on Beliefs under Knightian Uncertainty

Economic literature on social influence can be divided into sections: 1) Preference modification 2) Belief modification, since social influence can affect both preferences as well as beliefs. Belief modification literature uses the idea of information cascades, [See Bikhchandani et al. (1992)]. In information cascades, decisions are made in a sequence so later decision makers have an opportunity to combine their private information with the information inferred from the actions of others. In equilibrium, they may find it optimal to ignore their private information in favour of the information inferred from others.

In this paper, we assume that investors make decisions simultaneously so information cascades cannot arise. As discussed in the previous section, social psychologists have extensively studied the link between decisions made by an individual under ambiguity

and his social context and have documented that social context has a strong influence on an individual's decisions and especially so under ambiguity. This means that economic phenomena under ambiguity is in essence *socio-economic phenomena* demanding that we consider both individual economic incentives as well as the social context as the determinant of human behaviour. This paper carries out this modification and puts forward a model of asset pricing with social influence on probability judgments under Knightian uncertainty. The time series generated by our model displays a key stylised fact observed in financial market time series. The stylised fact called volatility clustering is a puzzling feature in the real world data. Before presenting our model, we provide a brief description of the volatility-clustering phenomenon.

3.1 Volatility Clustering

Volatility clustering is one of the most important “stylised facts” in financial markets. A large number of empirical studies report that while changes in asset prices appear to be random the magnitude (amplitude) of these changes has a structure to it. Changes of large magnitude typically tend to follow changes of large magnitude and changes of small magnitude tend to follow changes of small magnitude. This is called volatility clustering.

Mandelbrot (1963) first discovered this phenomenon in commodity prices. However, it is the pioneering work of Engle (1982) and Bollerslev (1986) on autoregressive conditional heteroskedastic (ARCH) models and their generalization GARCH models that brought this phenomenon to the forefront of economic research. Volatility clustering has shown to be present in a wide variety of financial assets including stock market indices, as well as exchange rates. In empirical work, volatility clustering is usually modelled by a statistical model such as GARCH or one of its extensions. As noted by Engle (2001), these models are only statistical descriptions of the data and they do not provide any structural explanation as to why the phenomenon arises. Rather, the statistical models postulate that volatility clustering has an exogenous source and is for example caused by the clustered arrival of random news about the economic fundamental, [See Engle (2004)].

Theoretical modern finance models based on rational expectations cannot generate volatility clustering. See Bossaerts (2003) for a detailed discussion of the empirical failure of rational expectations hypothesis. The causes of volatility clustering are poorly understood. Engle (2001) writes:

“The goal of volatility analysis must ultimately be to explain the causes of volatility. While, the time series structure is valuable for forecasting, it does not satisfy our need to explain volatility. Thus far, attempts to find the ultimate cause of volatility are not very satisfactory.”

3.2 The Model

We take it to be axiomatic that people disagree about the probabilities of events even when exposed to the same information. In the economics literature, this position is

taken, as an example, by Rubinstein (1993), who thinks that it is obvious that agents interpret the same information differently:

“Agents reading the same morning newspapers with the same stock price lists will interpret the information differently.”⁴

Empirical evidence also supports this assertion. Kandel and Pearson (1995) test and accept⁵ the hypothesis that agents in speculative markets interpret the same information differently. Kandel and Zilberfarb (1999) test and accept the hypothesis that different forecasters interpret the same information differently while forecasting inflation.

Our model has three sets of assumptions:

- 1) Assumptions about belief formation
- 2) Assumptions about price formation
- 3) Assumptions about updating confidence

3.2.1 Assumptions about belief formation

Each period, all agents receive the same information. They use a mental model to convert this information into a belief about the price level next period. There is a commonly known part of the model about which every one agrees and there is an unknown part about which agents disagree.⁶ Let θ_p be the interpretation of this information according to the commonly known part of the model. Each agent's belief (expectation about the next period's price level) x_{it} is some perturbation of θ_p : $x_{it} = \theta_p + v_{it} = E_{it}[p_{t+1}]$. This perturbation accounts for the idiosyncratic differences between different agents' mental models.

After forming his belief, each agent interacts with people in his social circle. These interactions influence his belief. This is captured by considering a 2-dimensional lattice and assigning a cell to each agent with neighbouring cells as his neighbours. Each agent's belief is affected by his interaction with his neighbours. Let z_{it} represent the belief of agent i after interacting with his neighbours:

$z_{it} = f(\text{neighbors' beliefs}, x_{it}) = E_{it}[p_{t+1} | \text{Social Interactions}]$ where f is some function describing how neighbours' beliefs influence an agent's belief.

Obviously, people have a direct interest in discovering and influencing the beliefs of others since stock price is a reflection average market beliefs. Keynes (1936) is one of the earlier economists to explicitly recognize this fact. He compared stock market behaviour to a beauty contest:

“Each competitor has to pick not those faces he himself finds prettiest, but those which he thinks are likeliest to catch the fancy of other competitors.”⁷

⁵ Technically, they reject the null of identical interpretation. However, it is customary to write that the alternative is accepted with the implicit understanding that rejection of the null is implied. As one example, Kurz (1997a), page 3, does the same.

⁶ Manski (2003) argues that econometricians trying to estimate a model are almost always in this position.

⁷ Keynes (1936), page 156.

Note that there does not have to be any explicit communication of beliefs since beliefs can be influenced by even the most innocuous and subtle clues as psychological evidence in section 1 shows. As an example, if people in one's social circle are exuberant since their team has won a football match then that exuberance may subconsciously make one an optimist in investment decisions also. Anecdotal evidence of such behaviour abound. As one example, the Pakistani Stock Exchanges made significant upward movements after their team won the cricket world cup in 1992.

3.2.2 Assumptions about price formation

Each agent optimises given his belief after social interactions, z_{it} . The standard optimisation exercise with one risk-free and one risky asset produces a demand curve for the risky asset of each agent. Assuming that the number of shares outstanding is constant and by equating them with aggregate demand, we can solve for the equilibrium price:⁸

$$p_t = \frac{1}{(1+r)N} \left\{ \sum_i^N E_{it}[p_{t+1} | \text{Social Interactions}] + \sum_i^N E_{it}[d_{t+1}] \right\}$$

where r is the one period risk free net return, N is the total number of agents and d_{t+1} is the intervening dividend. Similarly, in the next period, the whole process repeats, new information arrives, $(\theta^{(t+1)p})$ new private beliefs $(x_{i(t+1)})$ are formed, new beliefs after social interactions are formed, and the new equilibrium price P^{t+1} determined.

3.2.3 Assumptions about updating confidence

Once P^{t+1} is known, each agent compares the expectation error of his belief before social interactions, $|p_{t+1} - E_{it}[p_{t+1}]|$ with the expectation errors of his neighbours. If his expectation error is greater than the expectation error of his neighbours, he assigns a greater weight to their opinion in the next period. If his error is smaller, he assigns a lower weight to the opinion of his neighbours in the next period. We describe the exact weighting function, when we set the parameters of the simulation (next section).

In summary, the model works in the following way: All agents receive the same information each period. They interpret this information differently to arrive at different beliefs about the next period's price level. Then, they interact with agents in their social circle and these interactions influence their beliefs. Each agent optimises (by choosing between a risky and a risk free asset) given his belief after social interactions and in this process equilibrium price level is determined.

⁸See the Appendix for a standard derivation of this equation. Brock and Hommes (1998) derive this equation as an extension of asset pricing model to the case of heterogeneous expectations. Some authors such as Arthur et al. (1997) derive this equation from no-arbitrage arguments without any explicit optimisation exercise. Also see Chiarella and He (2001, 2002, 2003), Farmer and Joshi (2002), Lebaron (2000), Lebaron et al. (1999), Lux and Marchesi (1999), and Lesourne (1992). Note that the wealth does not appear in this equation. Individual wealth obviously has an effect on an individual's allocation decision. However, for the determination of stock price aggregate wealth distribution may be relevant and not the individual wealth. In any case, the focus of this paper is on how belief changes caused by social influence cause price changes; therefore we ignore any other variable except beliefs.

After the determination of equilibrium price next period, each agent calculates his expectation error and compares it with his neighbours' errors and accordingly adjusts the importance he attaches to his neighbours opinions.

3.2.4 Simulation Parameters

In what follows, subscripts denote the location of an agent in a 2-dimensional plane divided into cells (lattice). We use the following parameter values for simulation: $\theta_p \in [\text{current price} - 0.05 \times \text{current price}, \text{current price} + 0.05 \times \text{current price}]$
 $v_{ijt} \in [-0.05 \times \text{current price}, 0.05 \times \text{current price}]$
 $r = 0.05, N = 40000, E_{ijt}[d_{t+1}] = 1 \forall i, j, t$

θ_p represents the interpretation of new information according to the commonly known part of the model. Each period, θ_p takes a random value from a uniform distribution with the range defined above. The role of θ_p in the model is to ensure a steady arrival of new information each period. The results presented here are robust to the range of values θ_p can take.⁹ v_{ijt} is the idiosyncratic element in each agent's belief. Each period, for each agent, a random value is drawn from a uniform distribution with the range defined above. Together, these two parameters ensure that different agents have different interpretations in accordance with Knightian uncertainty. We use the simplest linear form for the function z_{ijt} (belief after social interactions, that is, $z_{ijt} = E_{ijt}[p_{t+1} | \text{Social Interactions}]$):¹⁰

$$z_{ijt} = a \times b_{ijt} + c \times x_{ijt} \quad (1)$$

where a and c are positive parameters, b_{ijt} is the average belief in the neighbourhood of agent ij , that is,

$$b_{ijt} = \frac{x_{(i+1)j} + x_{(i-1)j} + x_{i(j+1)} + x_{i(j-1)}}{4}$$

where $x_{(i+1)j}, x_{(i-1)j}, x_{i(j+1)}$ and $x_{i(j-1)}$ denote the beliefs of neighbours immediately

⁹ Of course, negative values are not allowed since price is a strictly non-negative variable.

¹⁰ Using a linear specification is preferred for the following reasons: Even the simplest of non-linear specification can generate extremely rich behaviour such as bifurcations, strange attractors and chaos. See Gulick (1992), Preston (1983), Collet and Eckmann (1980). So, in a non-linear specification one cannot be sure whether the results are due to social influence or due to the nature of nonlinearity. For a detailed discussion of rich behaviour of non-linear systems, see Drazin (1992) or May (1976). We suspect that linearity is preferred in social interactions literature (preference modification) for the same reason. See Glaeser and Scheinkman (2000). It may very well be the case that financial markets are non-linear systems as argued in the econophysics literature. See Wille (2004). However, the implications of nonlinearity (and chaos) for financial markets have been studied elsewhere. See Guanersdorfer et al. (2003), Guanersdorfer (2000), Hommes and Guanersdorfer (2003).

to the right, left, above, and below the agent, respectively. We assume that each agent has 4 neighbours.¹¹ x_{ijt} is the own belief of agent ij . Equation (1) states that the belief after social interactions depends on the average belief in one's social circle as well as on one's own initial predisposition. Parameters a and c control the relative importance that an agent attaches to others' opinion in his social circle. We will refer to a as intensity of social influence and c as own confidence.

For updating confidence, if the expectations error of an agent is greater than the expectation error of average neighbourhood belief, that is, If $|p_{t+1} - x_{ijt}| > |p_{t+1} - b_{ijt}|$

Then a goes up by an amount g , which is randomly drawn from a uniform distribution: $g \in [0.10 \times a, 0.50 \times a]$.

If the expectation error of an agent is less than the expectation error of average neighbourhood belief then a goes down by g . The rationale behind this assumption is as follows: if a person's social circle outperforms him then plausibly he will assign a greater weight to their opinion in the coming future. How much greater? That depends on his state of mind at the moment of decision, which depends on a lot of environmental factors (such as the type of movie he just saw).¹² These environmental factors are essentially random.

3.2.5 Simulation Results

The results depend on the relative importance of neighbours' beliefs b_{ijt} versus one's own idiosyncratic predisposition x_{ijt} . That is, on the relative magnitudes of parameters a and c . A number of representative simulations are run:

1. Simulation without social interactions. This simulation is run to establish the benchmark.
2. Simulation with social interactions and the parameter values: $a = 0.80, c = 0.20$
3. Simulation with social interactions and the parameter values: $a = 0.60, c = 0.20$
4. Simulation with social interactions and the parameter values: $a = 0.40, c = 0.20$
5. Simulation with social interactions and the parameter values: $a = 0.20, c = 0.20$

3.2.5.1 Simulation without Social Interactions

If there is no social influence, our model reduces to modern asset pricing model [substitute $a=0$, and $c=1$ in equation (1)], (See Figure 1). Unsurprisingly, Figure 1 is similar to output from a typical modern asset-pricing model. [See Tsay (2002)]. Returns are measured as changes in log-price. Of course, there is no volatility clustering.

¹¹Face-to-face interactions with people with whom one has strong social ties are likely to have the strongest influence on one's judgment. Typically, the number of such people is small (average 3.8 for innermost social circle). Results are similar for either 4 or 8 neighbours. Due to the sampling issue, it is clear that results will get weaker for larger neighbourhoods with our model becoming equivalent to modern asset pricing model for very large neighbourhoods (social influence will cancel out).

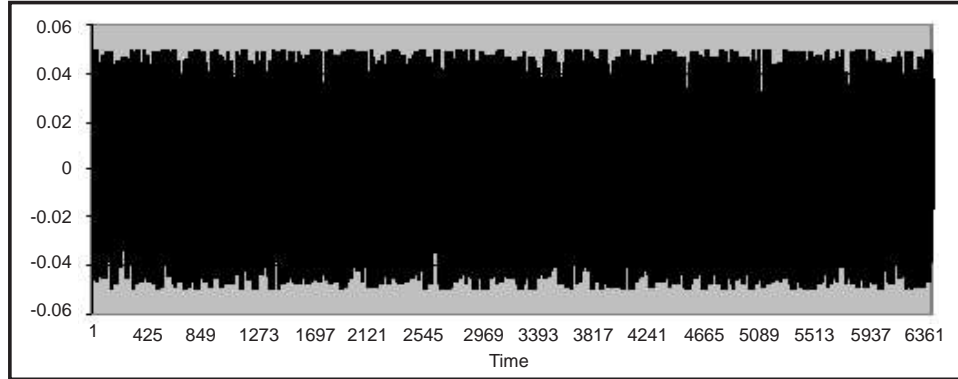


Figure 1. Returns without Social Interactions

3.2.5.2 Simulation with social interactions, $a=0.80$ and $c=0.20$

Figure 2 shows the returns generated by our model when $a=0.80$ and $c=0.20$

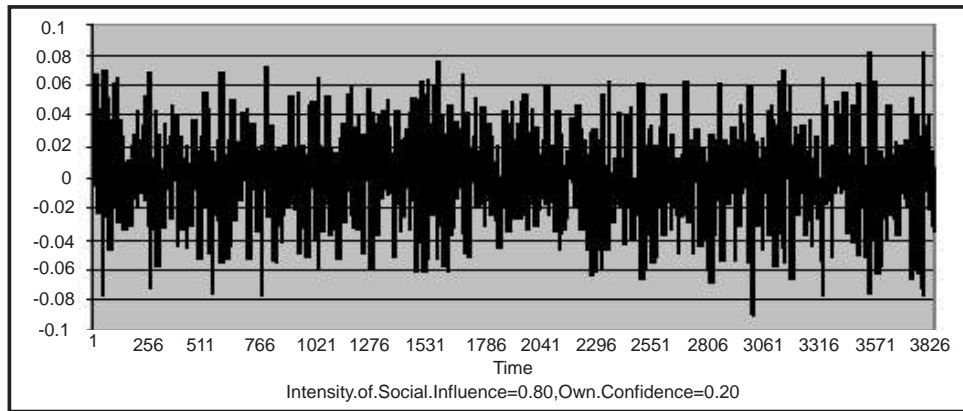


Figure 2. Returns

Volatility clustering can be seen clearly in figure 2. Autoregressive Conditional Heteroscedasticity (ARCH) regression can be employed as a test for volatility clustering. [See Tsay (2002), Engle (2001) or any text in financial econometrics (such as Wang (2003)]. If coefficients are significant then volatility clustering is present. As reported in Table 1, ARCH coefficients are significant, indicating volatility clustering.

ARCH (1) REGRESSION: TEST FOR VOLATILITY CLUSTERING				
Estimate	Error	t-Value	p-Value	ARCH EFFECT
ARCH0	0.000093	1.17E-05	7.94	<.0001 Yes
ARCH1	0.9133	0.0689	13.26	<.0001 Yes

Table 1

3.2.5.3 Simulation with social interactions, $a=0.60$ and $c=0.20$

Figure 3 shows the returns generated by our model when $\alpha=0.80$ and $\beta=0.20$.

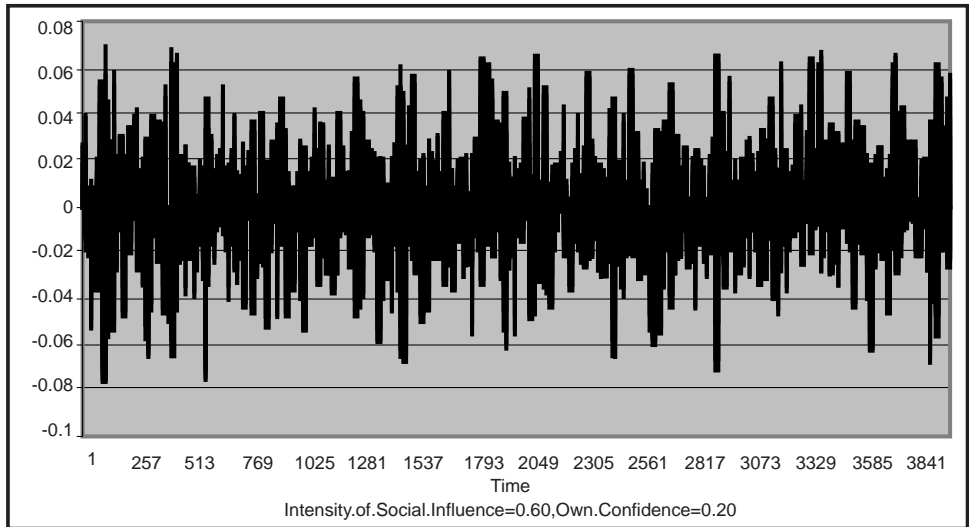


Figure 3. Returns

As before, volatility clustering can be seen.

We test for volatility clustering and find significant volatility clustering (see Table 2).

ARCH (1) REGRESSION: TEST FOR VOLATILITY CLUSTERING				
Estimate	Error	t-Value	p-Value	ARCH EFFECT
ARCH0	0.000072	8.80E-06	8.18	<.0001 Yes
ARCH1	0.8818	0.0674	13.07	<.0001 Yes

Table 2

3.2.5.4 Simulation with social interactions, $a=0.40$, $c=0.20$

As can be seen from figure 4, volatility clustering is present. This is confirmed by the ARCH regression results reported in Table 3.

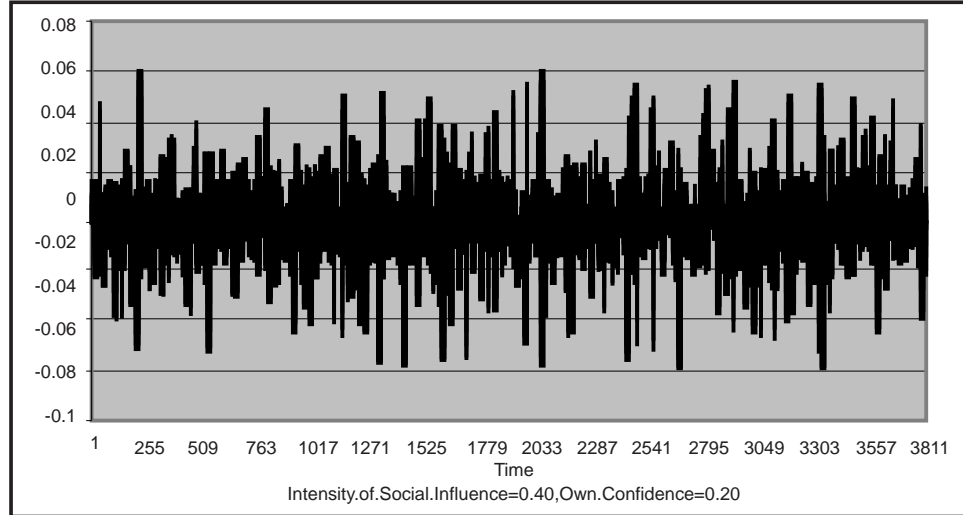


Figure 4. Returns

ARCH (1) REGRESSION: TEST FOR VOLATILITY CLUSTERING				
Estimate	Error	t-Value	p-Value	ARCH EFFECT
ARCH0	4.38E-05	5.27E-06	8.31	<.0001 Yes
ARCH1	0.8147	0.0634	12.85	<.0001 Yes

Table 3

3.2.5.5 Simulation with social interactions, $a=0.20$, $c=0.20$

Figure 5 shows the returns generated by our model when $a=0.20$ and $c=0.20$.

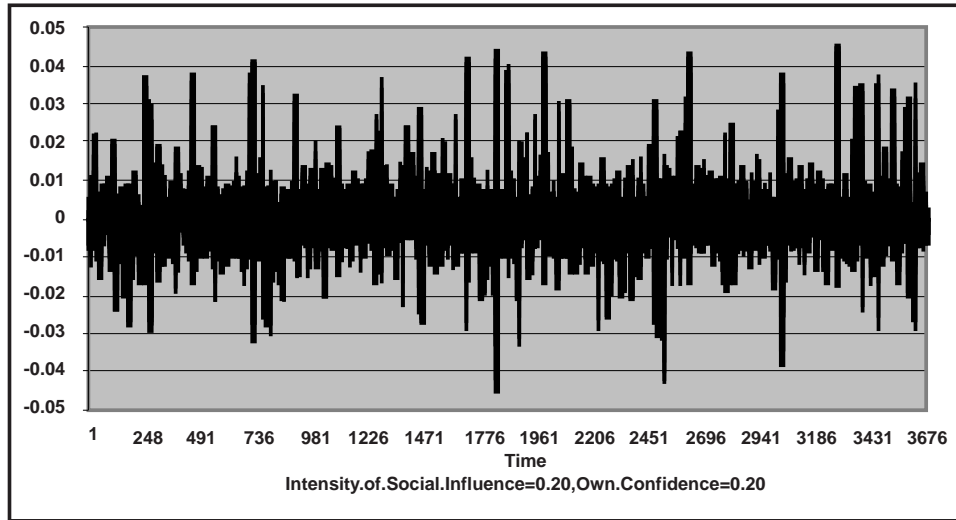


Figure 5

We test for volatility clustering and find significant volatility clustering (see Table 4).

ARCH (1) REGRESSION: TEST FOR VOLATILITY CLUSTERING				
Estimate	Error	t-Value	p-Value	ARCH EFFECT
ARCH0	218E-05	265E-06	8.23	<.0001 Yes
ARCH1	0.6922	0.057	12.15	<.0001 Yes

Table 4

4. Conclusion

Human beings are social animals and their social interactions undoubtedly affect their judgments. Here we present an exploratory model of social influence on judgment. Our results indicate that social influence may be playing a role in generating volatility clustering observed in financial markets.

References

- Asch, S. (1952). *Social Psychology*. Englewood Cliffs, NJ: Prentice Hall.
- Bargh, J. A., M. Chen, and L. Burrows (1996). Automaticity of Social Behaviour: Direct Effects of Traits Construct and Stereotypes Activation on Action. *Journal of Personality and Social Psychology*, 71(2), 230–244.
- Bollerslev, T. (1986). Generalized Autoregressive Conditional Heteroscedasticity. *Journal of Econometrics*, 31, 307-327.
- Bossaerts, P. (2003). *The Paradox of Asset Pricing*. Princeton: Princeton University Press.
- Brock, W.A. and Hommes, C.H. (1998). Heterogeneous Beliefs and Routes to Chaos in a Simple Asset Pricing Model. *Journal of Economic Dynamics and Control*, 22, 1235-1274.
- Chiarella, C., and He, X. (2003). Dynamics of Beliefs and Learning Under al-Processes - the Heterogeneous Case. *Journal of Economic Dynamics and Control*, 27, 503-531.
- Chiarella, C. and He, X. (2002). Heterogeneous Beliefs, Risk and Learning in a Simple Asset Pricing Model. *Computational Economics* 19, 95–132.
- Chiarella, C. and He, X. (2001). Asset Pricing and Wealth Dynamics under Heterogeneous Expectations. *Quantitative Finance*, 1, 509-526.
- Clements, M. P. and Hendry, D. F. (1999). *Forecasting Nonstationary Economic Time Series*. Cambridge, MA: MIT Press.
- Collet, P. and Eckmann, J. P. (1980). *Iterated Maps on the Interval as Dynamical Systems*. Boston: Birkhauser.
- Davidson, P. (1991). Is Probability Theory Relevant for Uncertainty: A Post-Keynesian Perspective. *Journal of Economic Perspectives*, 5, 129-43.
- Deutsch, M. and Gerard, H.B. (1955). A Study of Normative and Informational Social Influences upon Individual Judgment. *Journal of Abnormal and Social Psychology*, 3, 629-636.
- Drazin, P. G. (1992). *Nonlinear Systems*. UK: Cambridge University Press.
- Durlauf, S. N. (1993). Nonergodic Economic Growth. *Review of Economic Studies*, 60, 349-366.
- Ellison, G. and Fudenberg, D. (1993). Rules of Thumb for Social Learning. *Journal of Political Economy*, 101, 612-643.

- Engle, R. (2004). Risk and Volatility: Econometric Models and Financial Practice. *American Economic Review*, 94(3), 405-420.
- Engle, R. (2001). GARCH 101: The Use of ARCH/GARCH Models in Applied Econometrics. *Journal of Economic Perspectives*, 15(4), 157-168.
- Engle, R.F., (1982). Autoregressive Conditional Heteroscedasticity with Estimates of the Variance of United Kingdom Inflation. *Econometrica*, 50, 987-1007.
- Farmer, J. D. and Joshi, S. (2002). The Price Dynamics of Common Trading Strategies. *Journal of Economic Behaviour and Organization*, 49, 149-171.
- Forgas, J. P. and Moylan, S. (1987). After the Movies: Transient Mood and Social Judgments. *Personality and Social Psychology Bulletin*, 13, 467-477.
- Gilboa, I. and Schmeidler, D. (1989). Maxmin Expected Utility with Non-Unique Prior. *Journal of Mathematical Economics*, 18, 141-153.
- Gladwell, M. (2005). *Blink: The Power of Thinking without Thinking*. New York: Little, Brown.
- Guanersdorfer, A. (2000). *Adaptive Beliefs and the Volatility of Asset Prices*. Technical Report, SFB Adaptive Information Systems and Modelling in Economics and Management Science.
- Guanersdorfer, A., Hommes, C. and Wagener, F. (2003). Bifurcation Routes to Volatility Clustering. Tinbergen Institute Discussion Paper, TI-15/01.
- Gulick, D. (1992). *Encounters with Chaos*. New York: McGraw-Hill.
- Hommes, C. H., and Gaunersdorfer, A. (2003). Bifurcation Routes to Volatility Clustering under Evolutionary Learning. Working Paper, University of Vienna.
- Kandel, E. and Pearson, N. (1995). Differential Interpretation of Public Signals and Trade in Speculative Markets. *Journal of Political Economy*, 8, 31-72.
- Kandel, E. and Zilberfarb, B. (1999). Differential Interpretation of Information in Inflation Forecasts. *Review of Economics and Statistics*, 81(2), 217-226.
- Knight, F. (1921). *Risk, Uncertainty and Profit*. Boston and New York: Houghton Mifflin.
- LeBaron, B. (2000). Evolution and Time Horizons in an Agent-Based Stock Market. Working Paper Brandeis University.
- LeBaron, B., Arthur, W.B. and Palmer, R., (1999). Time Series Properties of an Artificial Stock Market. *Journal of Economic Dynamics and Control*, 23, 1487-1516.

- Levy, H. and Markowitz, H. (1979). Approximating Expected Utility by a Function of Mean and Variance. *American Economic Review*, 69, 308-17.
- Lux, T. and Marchesi, M. (1999). Scaling and Criticality in a Stochastic Multi-Agent model of a Financial Market. *Nature* 397, 498-500.
- Mandelbrot, B. (1963). The Variation of Certain Speculative Prices. *Journal of Business*, 36, 394-419.
- Manski, C. (2003). *Partial Identification of Probability Distributions*. New York: Springer-Verlag.
- Markowitz, H. (1952). Portfolio Selection. *Journal of Finance*, 7(1), 47-62.
- May, R. (1976). Simple Mathematical Models with some Very Complicated Dynamics. *Nature*, 261, 459-467.
- Preston, C. (1983). *Iterates of Maps on an Interval*. New York: Springer-Verlag.
- Rabin, M. (2000). Risk Aversion and Expected Utility Theory: A Calibration Theorem. *Econometrica*, 68, 1281-1292.
- Rubinstein, A. (1993). On Price Recognition and Computational Complexity in a Monopolistic Model. *Journal of Political Economy*, 473-84.
- Schwert, W. (1989). Why Does Stock Market Volatility Change Over Time? *Journal of Finance*, 44, 1115-1153.
- Sherif, M. (1936). *The Psychology of Social Norms*. New York: Harper.
- Steele, C. M. and Aronson, J. (1995). Stereotype Threat and the Intellectual Test Performance of African Americans. *Journal of Personality and Social Psychology*, 69, 797-811.
- Stock, J., Watson, M. (1996). Evidence on Structural Instability in Macroeconomic Time Series relations. *Journal of Business and Economic Statistics*, 14, 11-30.
- Tsay, R. (2002). *Analysis of Financial Time Series*. Chicago: Wiley Financial Engineering.
- Wang, P. (2003). *Financial Econometrics: Methods and Models*. New York: Routledge.
- Wells, G. L., and Petty, R. E. (1980). The Effects of Overt Head Movements on Persuasion: Compatibility and Incompatibility of Responses. *Basic Applied Social Psychology*, 1: 219-230.
- Wille, L. T. (2004). *New Directions in Statistical Physics: Econophysics, Bioinformatics, and Pattern Recognition*. New York: Springer-Verlag.

APPENDIX

Brock and Hommes (1998) put forward a simple model of asset pricing with heterogeneous beliefs (BH model). Their model is now a workhorse for literature with heterogeneous expectations. Guanersdorfer et al (2003), Guanersdorfer (2000), Chiarella and He (2003), Chiarella and He (2002), Chiarella and He (2001), Farmer and Joshi (2002), Lebaron (2000), Lebaron et al (1999), Lux and Marchesi (1999), and Lesourne (1992) are a few examples of use of this model.

In Brock and Hommes (1998), there are two types of assets, a risk free asset and a risky asset. Risk free asset pays a net return of r , which is between 0 and 1. That is, for a dollar of investment, the gross return is $(1+r)$ after a unit interval. Let p^t denote the price of risky asset that pays dividends, d . The dynamics of wealth of an agent type 'a' is described by

$$W_{a,t+1} = W_{at}(1+r) + R_{t+1}S_{at} \quad (\text{A.1})$$

where R_{t+1} is the excess return (in dollars) per share of risky asset over risk free asset, that is, $R_{t+1} = p_{t+1} + d_{t+1} - (1+r)p^t$ and S_{at} is the number of shares of risky asset bought by an agent of type 'a'. Let E_t and V_t denote conditional expectation and conditional variance, and let E_{at} and V_{at} denote the beliefs of investor type 'a' about these conditional expectation and variance.

Assume that investors are mean-variance maximizers.¹³

The demand for shares of risky asset by an agent of type 'a' can be obtained as follows.

$$\begin{aligned} & \text{Maximize} \{E_{at}[W_{a,t+1}] - (e/2)V_{at}[W_{a,t+1}]\} \\ & \Rightarrow S_{at} = \frac{E_{at}[R_{t+1}]}{eV_{at}[R_{t+1}]} \end{aligned} \quad (\text{A.2})$$

where e is interpreted as a risk aversion parameter.¹⁴

¹³Mean-Variance Optimisation is a decision making model proposed by Markowitz (1952) as an alternative to Expected Utility decision model. The Expected utility model gives the same results as the Mean-Variance model if the utility function is quadratic or returns are normally distributed. Levy and Markowitz (1979) show that mean-variance analysis can be regarded as a Taylor approximation (second order) of any given utility function (such as power utility) in the Expected Utility model. Rabin (2000) argues that Expected Utility model is absurd as a model of human decision-making. The Mean-Variance model is simpler, though less general; however, it does not suffer from serious plausibility issues such as the one raised by Rabin (2000).

¹⁴Not to be confused with the risk aversion parameter in the Expected Utility Model.

Assume a constant supply of outside shares over time, m . Further, assume that all agents agree about the variance and that the market clears:

$$\sum_1^N E_{at}[p_{t+1}] + \sum_1^N E_{at}[d_{t+1}] - \sum_1^N p_t(1+r) = m \times e \times V_t[R_{t+1}] \quad (\text{A.3})$$

$$\Rightarrow \sum_1^N E_{at}[p_{t+1}] + \sum_1^N E_{at}[d_{t+1}] - \sum_1^N p_t(1+r) = \sum_1^N \frac{m}{N} \times e \times V_t[R_{t+1}] \quad (\text{A.4})$$

$$\Rightarrow \sum_1^N E_{at}[p_{t+1}] + \sum_1^N E_{at}[d_{t+1}] - \sum_1^N \frac{m}{N} \times e \times V_t[R_{t+1}] - \sum_1^N p_t(1+r) = 0 \quad (\text{A.5})$$

$$\Rightarrow \sum_1^N E_{at}[p_{t+1}] + \sum_1^N \left\{ E_{at}[d_{t+1}] - \frac{m}{N} \times e \times V_t[R_{t+1}] \right\} - \sum_1^N p_t(1+r) = 0 \quad (\text{A.6})$$

Define risk-adjusted dividend as, $d^*_t = d_{t+1} - \frac{m}{N} \times e \times V_t(R_{t+1})$:

$$\Rightarrow \sum_1^N E_{at}[p_{t+1}] + \sum_1^N \{E_{at}[d^*_{t+1}]\} - \sum_1^N p_t(1+r) = 0 \quad (\text{A.7})$$

$$\Rightarrow \sum_1^N E_{at}[p_{t+1}] + \sum_1^N \{E_{at}[d^*_{t+1}]\} = N \times p_t(1+r) \quad (\text{A.8})$$

$$\Rightarrow p_t = \frac{1}{(1+r)N} \left\{ \sum_1^N E_{at}[p_{t+1}] + \sum_1^N E_{at}[d^*_{t+1}] \right\} \quad (\text{A.9})$$

CMER Working Paper Series

2006

No. 06-47
Moeen Cheema & Sikander A. Shah:
The Role of Mutual Funds and non-Banking
Financial Companies in Corporate Governance
in Pakistan

No. 06-46
Hammad A. Siddiqi:
Is it Social Influence on Beliefs under Ambiguity?
A Possible explanation for Volatility Clustering

No. 06-45
Niam Sipra:
Mutual Fund Performance in Pakistan, 1995-
2004

No. 06-44
Abid A. Burki, Mushtaq A. Khan and S.M. Turab
Hussain:
Prospects of Wheat and Sugar Trade between
India and Pakistan: A Simple Welfare Analysis

2005

No. 05-43
Jawaid Abdul Ghani and Arif Iqbal Rana:
The Economics of Outsourcing in a
De-integrating Industry

No. 05-42
Ahmed M. Khalid and Muhammad N. Hanif:
Corporate Governance for Banks in Pakistan:
Recent Developments and Regional Comparisons

No. 05-41
Atif Ikram and Syed Ali Asjad Naqvi:
Family Business Groups and Tunneling
Framework: Application and Evidence from
Pakistan

No. 05-40
Junaid Ashraf and Waqar I. Ghani:
Accounting in a Country:
The Case of Pakistan

No. 05-39
Rasul Bakhsh Rais and Asif Saeed:
Regulatory Impact Assessment of SECP's
Corporate Governance Code in Pakistan

No. 05-38
S.M. Turab Hussain:
Rural to Urban Migration and Network Effects
in an Extended Family Framework

No. 05-37
S.M. Turab Hussain:
Migration Policy, and Welfare in the Context of
Developing Economies: A Simple
Extended Family Approach

No. 05-36
S.M. Turab Hussain:
Combed Cotton Yarn Exports of Pakistan to US:
A Dispute Settlement Case

No. 05-35
Waqar I. Ghani and Junaid Ashraf :
Corporate Governance, Business Group
Affiliation and Firm Performance:
Descriptive Evidence from Pakistan

No. 05-34
Abid A. Burki, Mushtaq A. Khan and Faisal Bari:
The State of Pakistan's Dairy Sector: An
Assessment

2004

No. 04-33
Syed Zahid Ali:
Does Stability Preclude
Contractionary Devaluation?

No. 04-32
Syed Zahid Ali and Sajid Anwar:
Trade Liberalization Under New Realities

No. 04-31
Sikander A. Shah:
Mergers and the Rights of Minority
Shareholders in Pakistan

No. 04-30
Abid A. Burki and Mahmood-ul-Hasan Khan:
Effects of Allocative Inefficiency on Resource
Allocation and Energy Substitution in
Pakistan's Manufacturing

Abstract

Influencing and being influenced by others is the very essence of human behaviour. We put forward an exploratory asset-pricing model allowing for social influence on investor judgments under ambiguity. The time series of returns generated by our model displays volatility clustering, a puzzling stylised fact observed in financial markets. This suggests that social influence on investor judgments may be playing a role in generating volatility clustering.

Keyword: Social Influence, Knightian Uncertainty, Ambiguity, Volatility Clustering

JEL Classification: G12, D70, D71



**Centre for Management
and Economic Research**

Lahore University of Management Sciences,
Opposite Sector 'U', Defence Housing Authority,
Lahore Cantt. 54792, Pakistan
Phone: 92-42-5722670-9 (Ext. 4201)
Fax: 92-42-5722591
<http://ravi.lums.edu.pk/cmcr/>